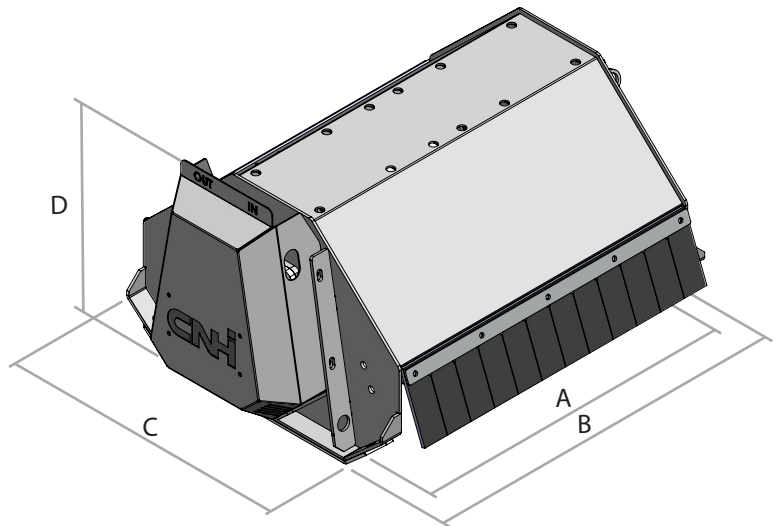


SHREDDER HEADS

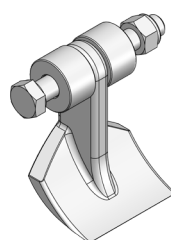
TC 60 GD - TC 80 GD

Model	TC 60 GD	TC 80 GD
Excavator (tonne)	1.2-2.5	1.8-2.5
A	60	85
B	81	106
C	55	55
D	45	45
Useful cut (cm)	60	80
Weight (kg)	65	75
Oil flow rate (l/min)	18-20	18-20
Min/Max (bar)	180	180
Rotor	Helical	Helical
Transmission	Direct	Direct
Cylinder capacity	8-11	8-11
No. of Tools	10	14
Mallet	MU1	MU1

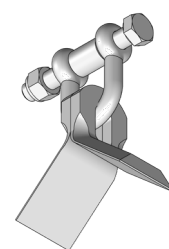


The TC 60 GD and the TC 80 GD feature the following technical characteristics and standard equipment:

- Single-acting hydraulic supply system to be connected to the free-discharge hammer system.
- Hydraulic gear motor with external drainage.
- IMPORTANT: back pressure at discharge max 4 bar
- Interchangeable tools.
- Accident-prevention guards.
- Double casing frame.
- Drilled counterplate for coupling.
- Hoses included - standard length 1,500 mm.



MU1 - 3-4 cm



CS1 - 3-4 cm



ACCESSORIES:

Self-levelling rocker:

	Excavator (tonne)	
	1.2-2.2	
Weight	+ 30 kg	

Blade kit for gardening (assembly not envisaged):

Model	TC 60 GD	TC 80 GD
Blade (No. of tools)	CS1 (20)	CS1 (28)

Valve block for machines without mulcher system or direct drainage line to the oil tank:

	Excavator (tonne)	
	1.2-2.2	

Support roller:

	Excavator (tonne)	
	1.2-2.2	

Pin coupler:

Model	TC 60 GD	TC 80 GD

Connection kit:

Model	Excavator (tonne)	
	0.6-2.1	2.2-2.5

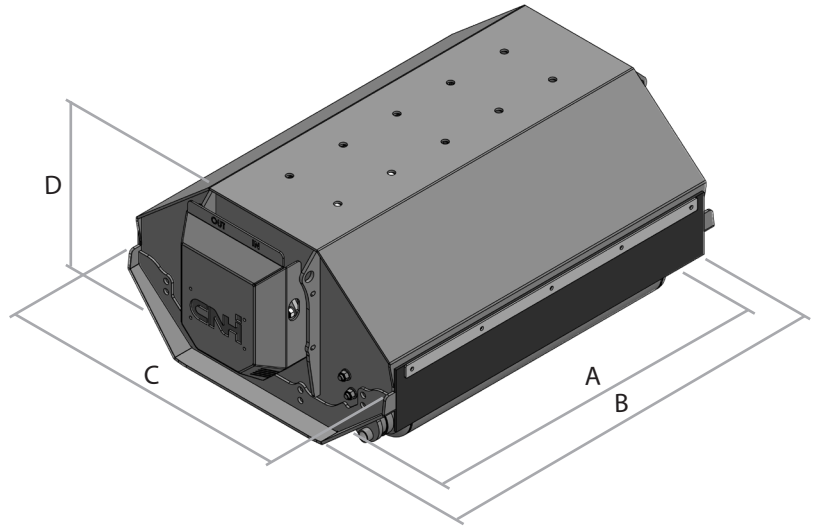
Quick-coupling attachment coupler:

Quick-coupling attachment	Excavator (tonne)	
	0.6-2.1	2.2-2.5
AR	AR 15	AR 30
CR	CR 15	CR 30
CS JANUS	CS 10	CS 30
KLAC	KLAC C	KLAC D
S NORDIC	S30/150 - S30/180	
CM	CM 20	CM 30
KLAC Alternatik	0	1

SHREDDER HEADS

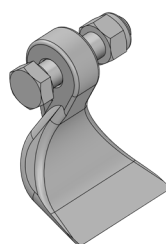
TC 80 L

Model	TC 80 L
Excavator (tonne)	2.8-3.5
A	85
B	105
C	72
D	42
Useful cut (cm)	80
Weight (kg)	140
Oil flow rate (l/min)	22-31
Min/Max (bar)	180
Rotor	Helical
Transmission	Direct
Cylinder capacity	11-16
No. of Tools	16
Mallet	MU2

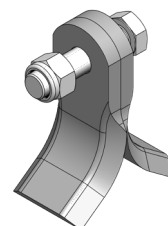


The TC 80 L features the following technical characteristics and standard equipment:

- Single-acting hydraulic supply system to be connected to the free-discharge hammer system.
 - Hydraulic gear motor with external drainage.
 - Adjustable rear roller.
 - Interchangeable tools.
 - Accident-prevention guards.
 - Double casing frame.
 - Drilled counterplate for coupling.
 - Hoses included - standard length 1,500 mm.
- IMPORTANT:** back pressure at discharge max 4 bar



MU2 - 4-5 cm



CU2 - 4-5 cm



ACCESSORIES:

Self-levelling rocker:

	Excavator (tonne)	
	2.2-2.5	2.6-3.5
Weight	+ 30 kg	

Blade kit for gardening (assembly not envisaged):

Model	TC 80 L
Blade (No. of tools)	CU2 (36)

Valve block for machines without mulcher system or direct drainage line to the oil tank:

	Excavator (tonne)	
	2.2-2.5	2.6-3.5
	2.5-3.5	

Connection kit:

Model	Excavator (tonne)	
	2.2-2.5	2.6-3.5

Pin coupler:

Model	TC 80 L
-------	---------

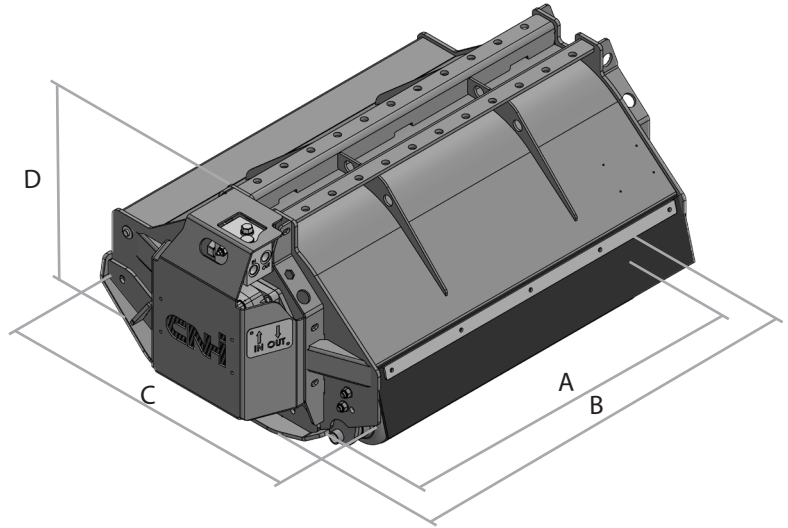
Quick-coupling attachment coupler:

Quick-coupling attachment	Excavator (tonne)	
	2.2-2.5	2.6-3.5
AR	AR 30	
CR	CR 30	
CS JANUS	CS 30	
KLAC	KLAC D	
S NORDIC	S30/150 - S30/180	S40/200
CM	CM 30	
KLAC Alternatik	1	

SHREDDER HEADS

TC 60 LD - TC 80 LD

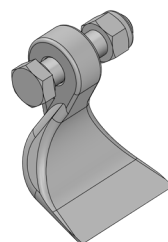
Model	TC 60 LD	TC 80 LD
Excavator (tonne)	2.8-3.5	2.8-3.5
A	60	85
B	85	110
C	76	76
D	50	50
Useful cut (cm)	60	80
Weight (kg)	160	180
Oil flow rate (l/min)	22-31	22-31
Min/Max (bar)	180	180
Rotor	Helical	Helical
Transmission	Direct	Direct
Cylinder capacity	11-16	11-16
No. of Tools	10	16
Mallet	MU2	MU2



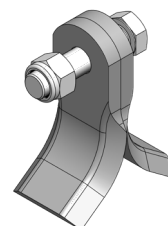
The TC 60 LD and the TC 80 LD feature the following technical characteristics and standard equipment:

- CAST IRON gear motor with external drainage.
- Certified bearings.
- Removable slides made of wear-resistant material.
- Hoses included - standard length 1,500 mm.
- Rotor with MU hammers.
- Support roller Ø 130.
- Accident-prevention guards.
- Drilled counterplate for coupling.

IMPORTANT: back pressure at discharge max 4 bar



MU2 - 4-5 cm



CU2 - 4-5 cm



ACCESSORIES:

Self-levelling rocker:

	Excavator (tonne)	
	2.5-3.5	
Weight	+ 30 kg	

Blade kit for gardening (assembly not envisaged):

Model	TC 60 LD	TC 80 LD
Blade (No. of tools)	CU2 (20)	CU2 (32)

Valve block for machines without mulcher system or direct drainage line to the oil tank:

	Excavator (tonne)	
	2.5-3.5	

Connection kit:

Model	Excavator (tonne)	
	2.2-2.5	2.6-3.5

Pin coupler:

Model	TC 60 LD	TC 80 LD
-------	----------	----------

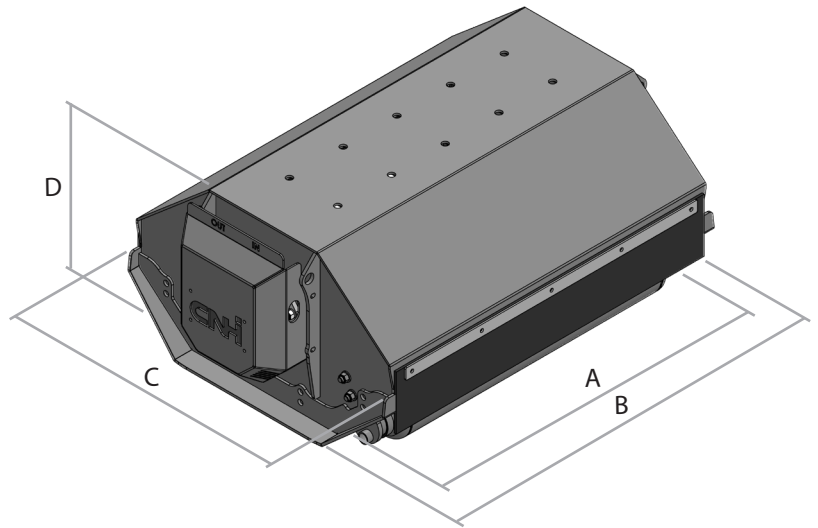
Quick-coupling attachment coupler:

Quick-coupling attachment	Excavator (tonne)	
	2.2-2.5	2.6-3.5
AR	AR 30	
CR	CR 30	
CS JANUS	CS 30	
KLAC	KLAC D	
S NORDIC	S30/150 - S30/180	S40/200
CM	CM 30	
KLAC Alternatik	1	

SHREDDER HEADS

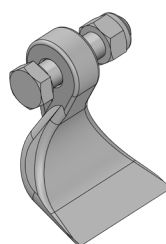
TC 100 L - TC 120 L

Model	TC 100 L	TC 120 L
Excavator (tonne)	2.8-3.5	3.6-5.5
A	100	120
B	120	140
C	72	73
D	42	42
Useful cut (cm)	100	120
Weight (kg)	155	170
Oil flow rate (l/min)	48-53	48-53
Min/Max (bar)	180	180
Rotor	Helical	Helical
Transmission	Direct	Direct
Cylinder capacity	11-16-22	11-16-22
No. of Tools	18	20
Mallet	MU2	MU2

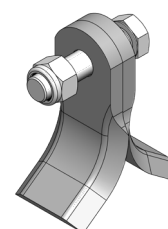


The TC 100 L and the TC 120 L feature the following technical characteristics and standard equipment:

- Single-acting hydraulic supply system to be connected to the free-discharge hammer system.
 - Hydraulic gear motor with external drainage.
 - Adjustable rear roller.
 - Interchangeable tools.
 - Accident-prevention guards.
 - Double casing frame.
 - Drilled counterplate for coupling.
 - Hoses included - standard length 1,500 mm.
- IMPORTANT:** back pressure at discharge max 4 bar



MU2 - 4-5 cm



CU2 - 4-5 cm



ACCESSORIES:

Self-levelling rocker:

	Excavator (tonne)	
	2.2-2.5	2.6-3.5
Weight	+ 30 kg	

Blade kit for gardening (assembly not envisaged):

Model	TC 100 L	TC 120 L
Blade (No. of tools)	CU2 (36)	CU2 (40)

Valve block for machines without mulcher system or direct drainage line to the oil tank:

	Excavator (tonne)	
	2.2-2.5	2.6-3.5

Pin coupler:

Model	TC 100 L	TL 120 L

Quick-coupling attachment coupler:

Quick-coupling attachment	Excavator (tonne)			
	2.2-2.5	2.6-3.5	3.6-4.1	4.2-5.5
AR	AR 30		AR 40	AR 40
CR	CR 30		CR 40	CR 40
CS JANUS	CS 30			
KLAC	KLAC D			KLAC E
S NORDIC	S30/150 - S30/180	S40/200		
CM	CM 30			CM 100
KLAC Alternatik	1		2	

Connection kit:

	Excavator (tonne)			
	2.2-2.5	2.6-3.5	3.6-4.1	4.2-5.5

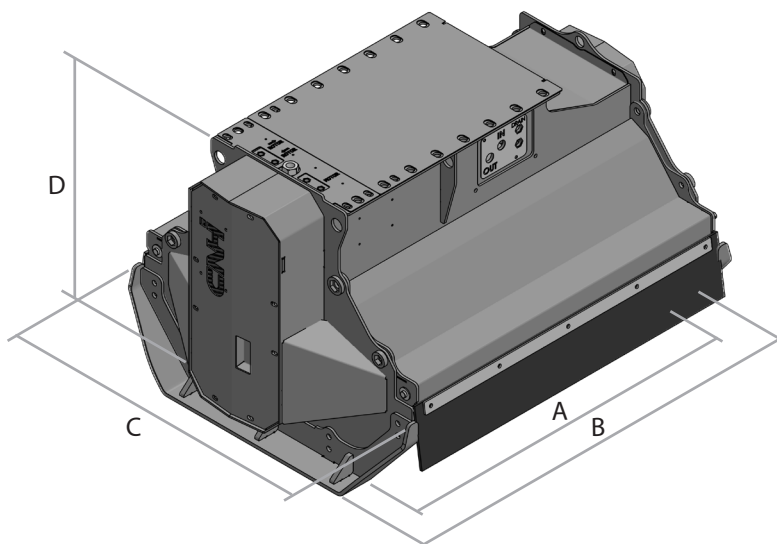
The prices shown do not include VAT and transport.

3.5 - 5.5 t

SHREDDER HEADS

TC TWIN 65 G - TC TWIN 65 GF

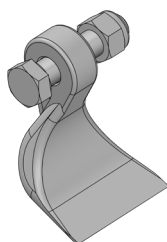
Model	TC TWIN 65 G	TTC TWIN 65 GF
Excavator (tonne)	3.5-5.5	3.5-5.5
A	60	60
B	83	83
C	79	79
D	64	64
Useful cut (cm)	60	60
Weight (kg)	160	170
Oil flow rate (l/min)	48-53	48-53
Min/Max (bar)	180	180
Rotor	Helical	Helical forestry
Transmission	Belt	Belt
Cylinder capacity	16	16
No. of Tools	10	10
Mallet	MU2	MF2



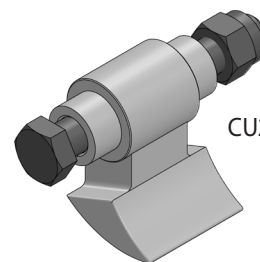
The TC TWIN 65 G and the TC TWIN 65 GF feature the following technical characteristics and standard equipment:

- Cast iron gear motor
- Hoses included - standard length.
- Belt transmission.
- Rotor with MU/MF hammers.
- Ball bearings.
- Accident-prevention guards.
- Height-adjustable slides made of wear-resistant material.
- Drilled counterplate for coupling.
- Centralised greasing system, accessible from the top of the housing.

MU2 - 4-5 cm



CU2 - 4-5 cm





ACCESSORIES:

Self-levelling rocker:

	Excavator (tonne)	
	2.2-2.5	2.6-3.5
Weight	+ 30 kg	

Pin coupler:

Model	TC TWIN 65 G	TTC TWIN 65 GF

Valve block for machines without mulcher system or direct drainage line to the oil tank:

--	--

Quick-coupling attachment coupler:

Quick-coupling attachment	Excavator (tonne)			
	2.2-2.5	2.6-3.5	3.6-4.1	4.2-5.5
AR	AR 30		AR 40	AR 40
CR	CR 30		CR 40	CR 40
CS JANUS	CS 30			
KLAC	KLAC D			KLAC E
S NORDIC	S30/150 - S30/180	S40/200		
CM	CM 30			CM 100
KLAC Alternatik	1		2	

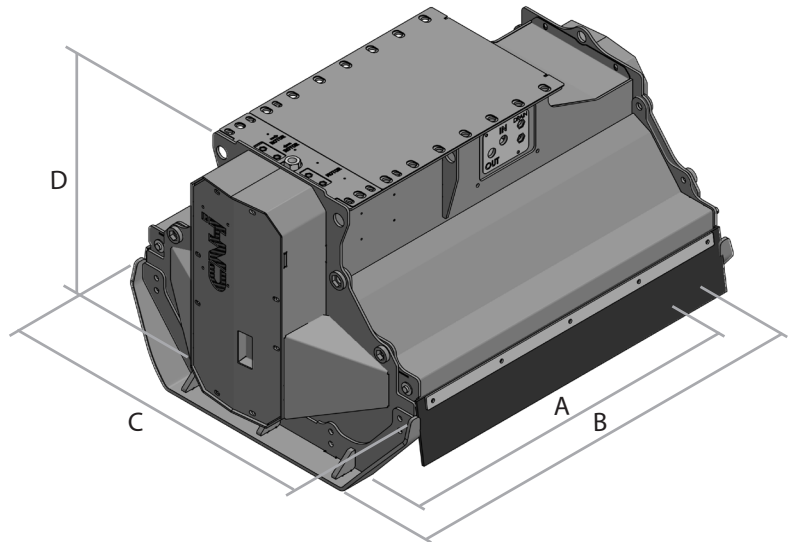
Connection kit:

	Excavator (tonne)		
	2.6-3.5	3.6-4.1	4.2-5.5

SHREDDER HEADS

TC TWIN 85 G - TC TWIN 85 GF

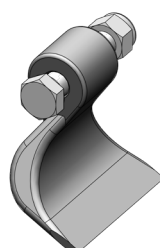
Model	TC TWIN 85 G	TC TWIN 85 GF
Excavator (tonne)	4.2-5.5	4.2-5.5
A	85	85
B	108	108
C	79	79
D	64	64
Useful cut (cm)	85	85
Weight (kg)	200	200
Oil flow rate (l/min)	48-53	48-53
Min/Max (bar)	180	180
Rotor	Helical	Helical forestry
Transmission	Belt	Belt
Cylinder capacity	22	22
No. of Tools	8	8
Mallet	MR3	MF2



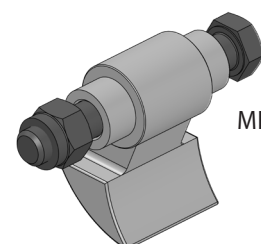
The TC TWIN 85 G and the TC TWIN 85 GF feature the following technical characteristics and standard equipment:

- Cast iron gear motor
- Belt transmission.
- Height-adjustable slides made of wear-resistant material Hoses included - standard length.
- Rotor with MR/MF hammers.
- Accident-prevention guards.
- Drilled counterplate for coupling.
- Centralised greasing system, accessible from the top of the housing.

IMPORTANT: back pressure at discharge max 4 bar



MR3 - 5-6 cm



MF2 - 6-8 cm



ACCESSORIES:

Self-levelling rocker:

	Excavator (tonne)
	4.2-5.5
Weight	+ 30 kg

Pin coupler:

Model	TC TWIN 85 G	TC TWIN 85 GF

Valve block for machines without mulcher system or direct drainage line to the oil tank:

	Excavator (tonne)
	4.2-5.5

Connection kit:

Model	Excavator (tonne)
	4.2-5.5

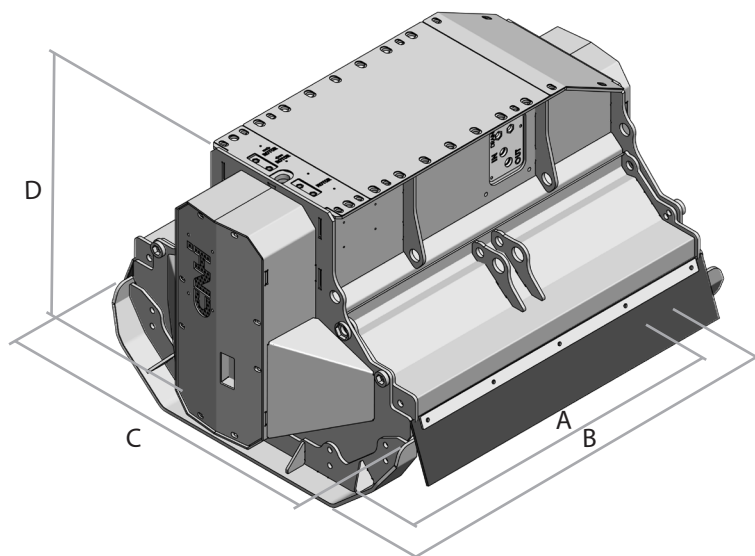
Quick-coupling attachment coupler:

Quick-coupling attachment	Excavator (tonne)
	4.2-5.5
AR	AR 40
CR	CR 40
CS JANUS	CS 30
KLAC	KLAC E
S NORDIC	S40/200
CM	CM 100
KLAC Alternatik	2

SHREDDER HEADS

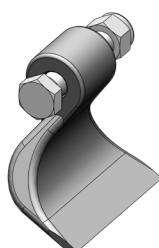
TC TWIN 80 L - TC TWIN 80 LF - TC TWIN 100 L

Model	TC TWIN 80 L	TC TWIN 80 LF	TC TWIN 100 L
Excavator (tonne)	6.0-7.5	6.0-7.5	6.0-10
A	85	85	100
B	112	112	112
C	85	85	85
D	66	68	64
Useful cut (cm)	85	85	100
Weight (kg)	285	330	335
Oil flow rate (l/min)	60	60	60
Min/Max (bar)	180	180	180
Rotor	Helical	Helical forestry	Helical
Transmission	Belt	Belt	Belt
Cylinder capacity	27	27	27
No. of Tools	8	16	16
Mallet	MR3	MF2	MR3

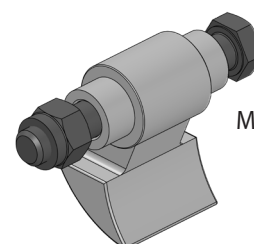


The TC TWIN 80 L, the TC TWIN 80 LF and the TC TWIN 100 L feature the following technical characteristics and standard equipment:

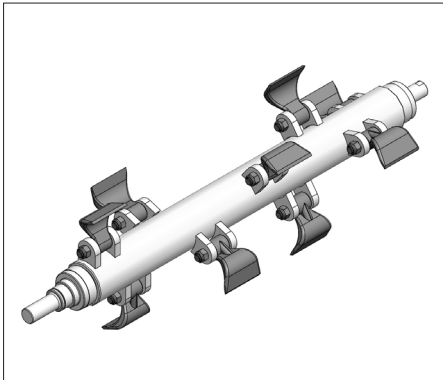
- Cast iron gear motor with external drainage
 - Mechanically adjustable front and rear outlet.
 - Hoses included - standard length.
 - Accident-prevention guards.
 - Drilled counterplate for coupling.
 - Centralised greasing system, accessible from the top of the housing.
 - Double-row roller bearings.
 - Height-adjustable slides made of wear-resistant material.
- IMPORTANT: back pressure at discharge max 4 bar



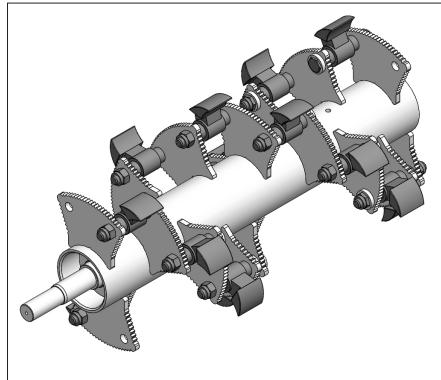
MR3 - 5-6 cm



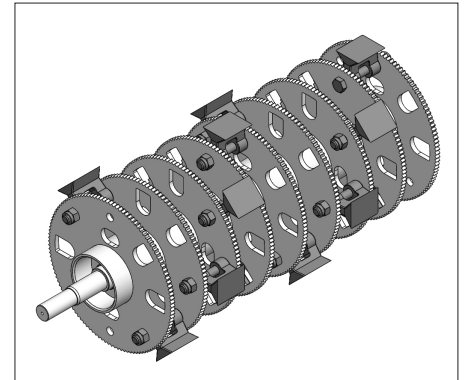
MF2 - 6-8 cm



Rotor MU-R
(TC TWIN 80 L - TC TWIN 100 L)



Rotor MU-F
(TC TWIN 100 LF)



Rotor MF-P
available on request

ACCESSORIES:

Self-levelling rocker:

	Excavator (tonne)	
	6.0-7.5	
Weight	+ 30 kg	

Valve block for machines without mulcher system or direct drainage line to the oil tank:

	Excavator (tonne)	
	6.0-7.5	

Quick-coupling attachment coupler:

Quick-coupling attachment	Excavator (tonne)	
	5.6-6.0	6.1-7.5
AR	AR 50	
CR	CR 50	
CS JANUS	CS 30	
KLAC	KLAC E	
S NORDIC	S40/200	S45
CM	CM 100	
KLAC Alternatik	3	

Pin coupler:

Model	TCTWIN 80 L	TCTWIN 80 LF	TCTWIN 100 L
-------	-------------	--------------	--------------

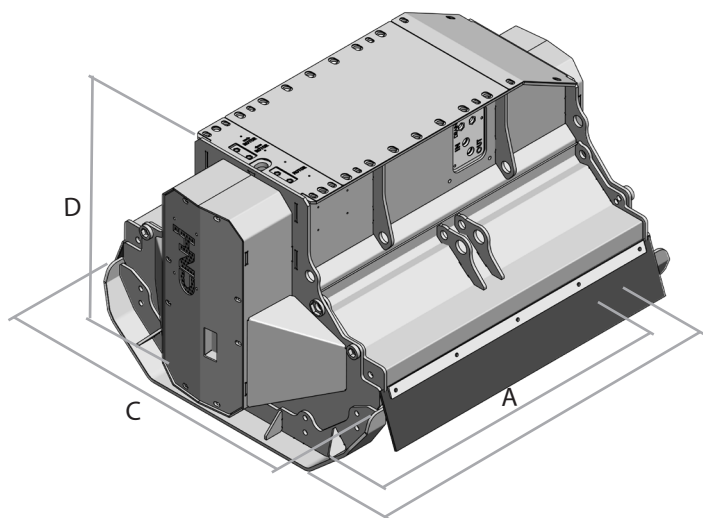
Connection kit:

Model	Excavator (tonne)	
	5.6-6.0	6.1-7.5

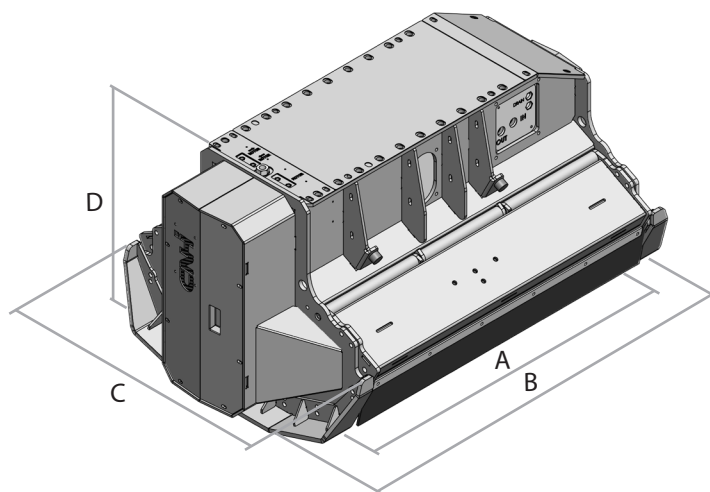
8.0 - 10.0 t

SHREDDER HEADS

TC TWIN 100 LF - TC TWIN 100 P - TC TWIN 130 P

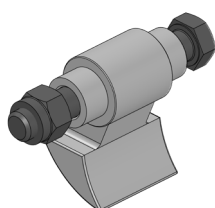


TWIN LF SERIES

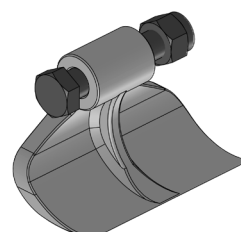


TWIN P SERIES

Model	TC TWIN 100 LF	TC TWIN 100 P	TC TWIN 130 P
Excavator (tonne)	8.0-10.0	8.0-10.0	8.0-10.0
A	100	100	130
B	127	133	163
C	85	88	88
D	64	64	72
Useful cut (cm)	100	100	130
Weight (kg)	390	460	490
Oil flow rate (l/min)	57	57	57
Min/Max (bar)	180	180	180
Rotor	Helical forestry	Helical	Helical
Transmission	Belt	Belt	Belt
Cylinder capacity	34	34	34
No. of Tools	18	10	14
Mallet	MF2	MK3	MK3



MF2 - 6-8 cm



MK3 - 5-6 cm

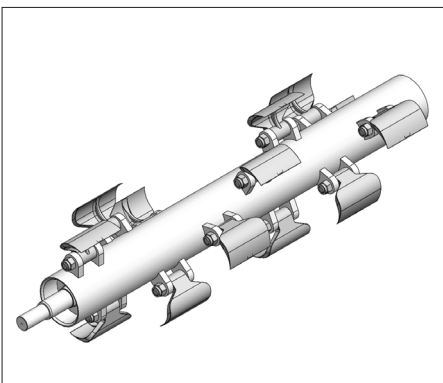


The TC TWIN 100 LF features the following technical characteristics and standard equipment:

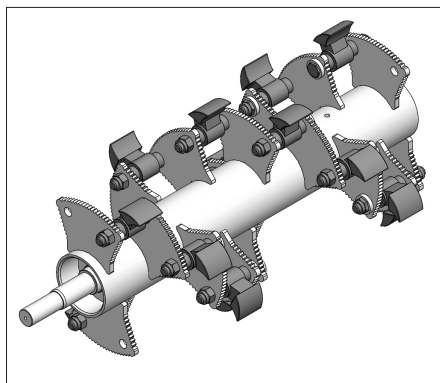
- Cast iron gear motor with external drainage
- IMPORTANT: back pressure at discharge max 4 bar
- Mechanically adjustable front and rear outlet.
- Anti-cavitation valve.
- Hoses included - standard length.
- Accident-prevention guards.
- Double-row roller bearings.
- Height-adjustable slides made of wear-resistant material.
- Drilled counterplate for coupling.
- Centralised greasing system, accessible from the top of the housing.

The TC TWIN 100 P and the TC TWIN 130 P feature the following technical characteristics and standard equipment:

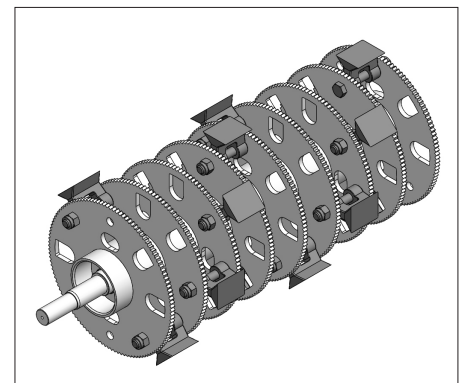
- Cast iron gear motor with external drainage
- IMPORTANT: back pressure at discharge max 4 bar
- VRP flow and pressure regulation valve.
- Mechanically adjustable front and rear outlet.
- Hoses included - standard length.
- Accident-prevention guards.
- Drilled counterplate for coupling.
- Centralised greasing system, accessible from the top of the housing.
- Double-row roller bearings.
- Height-adjustable slides made of wear-resistant material.



Rotor MU-K
(TC TWIN 100 P - TC TWIN 130 P)



Rotor MU-F
(TC TWIN 100 LF)



Rotor MF-P
available on request

SHREDDER HEADS

TC TWIN 100 LF - TC TWIN 100 P - TC TWIN 130 P

ACCESSORIES:

Self-levelling rocker:

	Excavator (tonne)
	8.0-10.0
Weight	+ 30 kg

Valve block for machines without mulcher system or direct drainage line to the oil tank:

	Shredder heads	
	TWIN LF	TWIN P

Pin coupler:

Model	TC TWIN 100 LF	TC TWIN 100 P	TC TWIN 130 P

Connection kit:

Model	Excavator (tonne)
	7.6-10.00

Quick-coupling attachment coupler:

Quick-coupling attachment	Excavator (tonne)
	7.6-10.0
AR	AR 70
CR	CR 70
CS JANUS	CS 80
KLAC	KLAC F
S NORDIC	S50
CM	CM 100
KLAC Alternatik	3

