

MINI TRACK LOADER

MTL50



 **EUROCOMACH**

Concrete solutions. Always.

ONE MACHINE, MULTIPLE FUNCTIONS

Ready to use, versatile, suitable for outdoor work, but also for more limited indoor spaces: the new MTL50 is the right solution for large and small projects to be handled quickly and efficiently.

1 MULTIFUNCTIONAL

Thanks to the hydraulic and electrical fittings on the machine, as well as the mechanical quick coupling (CII standard for this product category), it is possible to equip the MTL50 with the most varied types of attachments, which highlights its great multifunctionality.

2 SUITABLE FOR ALL SPACES

The MTL is available in two versions: narrow track (track width 180 mm, bucket width 914 mm); wide track (track width 250 mm, bucket width 1050 mm). In addition to reducing ground pressure, the wide track maximises machine stability.

3 READY-TO-USE

The operator can jump directly on the machine and start working under any conditions. The completely safe workstation also guarantees maximum visibility.

4 STRONG AND UNSTOPPABLE

Thanks to its design and technical capabilities, the MTL guarantees strength in pushing and pulling movements, not just load capacity. Maximum traction is guaranteed on all types and conditions of terrain, even the most difficult.

5 SAFE

The machine can only be used with the operator on board after confirming the start-up operation with the PTO (Push to Operate) button. The control works immediately if the operator is correctly positioned on the work station (footboard).

On sloping terrain (maximum slope 27% - 15°), it is possible to engage the parking brake (P) to move the booms, bucket and attachments only. This feature inhibits the machine from moving, thus guaranteeing the operator's safety in accordance with the working context.

6 ERGONOMIC

The operator can work in total comfort even in adverse conditions. The ergonomic controls and the operator's footboard, equipped with its own suspension system, make it suitable for all your needs, allowing you to work peacefully and safely for longer periods of time. In addition, you can find a support cushion and two external handles for increased safety.



POWER AND COMFORT, THE PERFECT COMBINATION

The MTL50 provides engine power and strength, without neglecting operator comfort: the ergonomic workstation and easy access to the controls offer maximum efficiency.

PERFORMANCE

The generous power of the 1261 cc Kubota engine with kW 18.2/ HP 24.4 is of high standard for the 1.5 ton category. The lifting capacity is 450 - 500 kg, providing ample manoeuvrability.

HYDRAULIC JOYSTICKS

The right-hand hydraulic joystick controls the boom and attachments, the left-hand joystick the travel drive. On the right-hand joystick it is possible to activate the boom's floating mode, ideal for all equipment that must follow the ground line throughout the work cycle (e.g. mulcher or snow plough). On the side of the controls, there are two convenient object holders (mobile phone and 1.5L bottle), while inside the support cushion there is a document holder.

HYDRAULIC SYSTEM

Hydraulic system with tandem pump for transmission and 50L service pump for booms, buckets and attachments. Single- and double-acting hydraulics, direct drain line to tank and 14-pin electrical connector amplify the machine's multifunctionality.

OPTIONAL CONTROLS AND LED BAR

All equipment is activated by electrical and hydraulic controls on the control console (AUX 1 roller and optional push buttons). The front LED bar can be activated with one click from the dedicated button, while two clicks are required to activate the rear. Both provide visibility up to 25 m.



Control console with piloted hydraulic joysticks.



Two convenient object holders and two external support handles for added security.



ONE MACHINE MANY ATTACHMENTS

Every job requires the right equipment, and with the MTL50 it is possible to use the full range of CNH branded attachments, making it suitable for the most diverse contexts from construction to agriculture (renovations, vineyards, areas where mud or debris need to be removed, green maintenance).

Compatible with the MTL50:

- Various types of bucket with hangers (industrial , agricultural and forestry)
- Various types of flail heads
- Auger
- Pallet forks
- Asphalt cutter
- Snow Blade
- Dozer Blade
- Catenary
- Sweeper
- Scraper Blade
- Grapple
- Hammer



MAINTENANCE HAS NEVER BEEN EASIER.

Maintenance of the MTL50 is quick and easy.
The front and rear opening of the bonnets allows access to the main components with ease.

ACCESSIBILITY

The opening of the three bonnets allows access to all the main elements of the machine for ordinary and extraordinary maintenance operations.

EASY ACCESS TO ALL COMPONENTS

- Air filter, fuel filter.
- Battery, alternator, compressor, injection pump, radiator, hydraulic system, etc.
- Oil and fuel tanks.

FILTER REPLACEMENT MANAGEMENT

You can easily manage the replacement, maintenance and/or level control of the main components for ordinary and extraordinary maintenance.

TRANSPORT SAFETY

The four attachment points (2 at the front and 2 at the rear) facilitate safe transport of the machine on any type of vehicle.



Front access to engine, air and fuel filters.

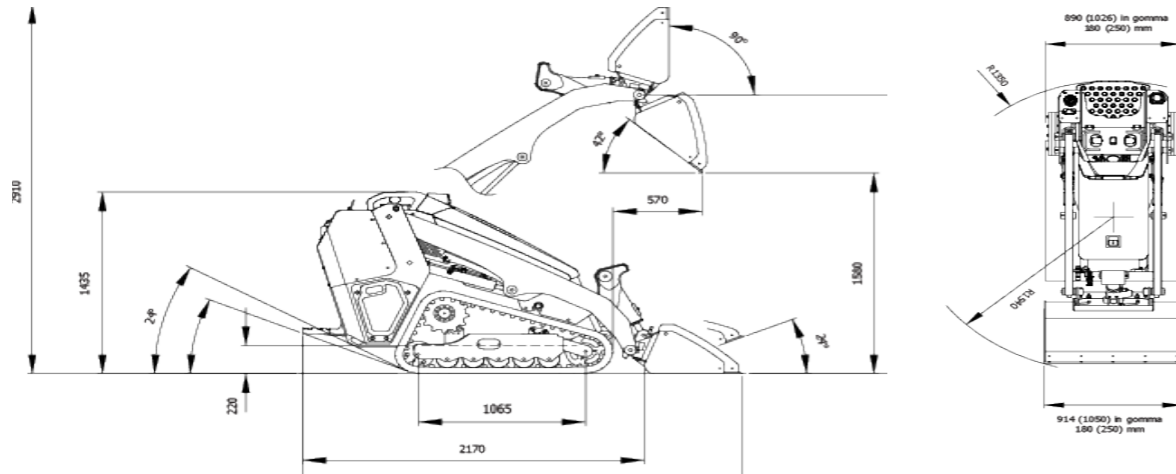


Rear access to battery and pump.



SPEC SHEET

STANDARD AND OPTIONALS



Operating weight according to ISO 6016 (with shovel and operator) (kg)	1.740
Transport weight - optional version with narrow tracks (NT) (without bucket 76 kg and operator 75 kg) (kg)	1.440
Transport weight - optional version with wide tracks (WT) (without bucket 83 kg and operator 75 kg) (kg)	1.580
Ground bearing pressure(kg/cm ²)	0,37
Travelling speed (km/h)	0 ÷ 7,5

ENGINE

Type	EU Stage V - EPA Tier 4 Final KUBOTA D1305
Power (2.600 rpm) (kW - HP)	18,2 - 24,4
Displacement (cc)	1.261
Number of cylinders n°	3
Cooling	Liquid
Fuel	Diesel
Fuel consumption (lt/h)	3,6
Alternator (V (A))	12 (40)
Battery (V (Ah))	12 (62)

HYDRAULIC SYSTEM

System type	Open center
Transmission type	Hydrostatic with hydraulic tandem pump and radial piston motors
Pump types	1 tandem pump + 1 gear pump
Total gear pump flow rate (lt/min)	54
Max. circuit calibration pressure (bar)	210
Auxiliary system (max. pressure)	
AUX 1 (lt/min (bar))	54 (175) 54 (210 max)

PERFORMANCES

Tipping load (ISO 14397)	
Tracks 250 mm	1.310
Tracks 180 mm	1.250

Operating load (ISO 14397, no more than 35% of tipping load)	
Tracks 250 mm	460
Tracks 180 mm	440
Bucket breaking force (daN)	1.760
Bucket capacity (m ³ /mm)	0,14 (1.080), 0,12 (914)
Bucket width (mm)	1.050 - 914
Traction force (daN)	1.570
Max. slope	27% - 15°

FILLINGS

Fuel tank (lt)	30,0
Hydraulic oil tank (lt)	17,0
Hydraulic circuit capacity (lt)	20
Cooling system capacity (lt)	3,5
Engine oil (lt)	4,5

CONTROLS

Hydraulic servo controls for working operations	2 Joysticks
Arm and bucket	Right Joystick
Travel drive	Left Joystick
Auxiliary AUX 1	Potentiometer on right Joystick

COUNTER WEIGHTS

Additional ballast weight (each - kg)	22
Number of ballast weights with narrow tracks (NT)	1+1
Number of ballast weights with wide tracks (WT)	3+3

UNDERCARRIAGE

Structure undercarriage	With fixed rollers
Lower rollers n°	5 right + 5 left (oil bath)
Rollers above n°	n.d.
Chain tensioner type	grease hydraulic adjustment
Rubber tracks (mm)	250x72x45, 180x72x45

STANDARD

- Version with wide tracks which includes:
 - 250mm rubber track
 - Bucket width 1050 mm (0.14 m³)
 - 3+3 additional side ballast (22 kg each)

- Mechanical quick coupler, interchangeable equipment type CII.
- Single-acting/double-acting auxiliary hydraulic circuit (with mechanical diverter) by proportional control on the joystick with retainer.
- Drain to tank.
- 14-pin single-pole electrical outlet.
- Automatic engine stop device in the event of tipping.
- Tilting and cushioned operator platform.
- Operator presence sensor.
- Operator grab handles.
- Key start.
- Manual throttle.
- 1.5L bottle holder.
- Cell phone pocket.
- Document compartment.
- Glow plugs.

OPTIONAL

- Narrow Track Version, which includes:
 - 180 mm rubber track
 - Bucket Width 914 mm (0.12 m³)
 - 1+1 additional counterweights (22 kg each)

- Biodegradable oil and lubricants.
- Bucket teeth.
- Teeth covering blade.

- Fuel filter with water separator.
- Electric motor fuel pump.
- Lockable hood.
- Double hydrostatic piston travel motor.
- SAHR parking brake.
- Floating system.
- Radial lifting geometry.
- 12V auxiliary electrical socket in the driving position.
- Front and rear LED work lights.
- Horn.

- Sharp-saving blade.
- GEO SERVICE system (geolocalization).
- Customization of bonnet colors as an alternative to orange Eurocomach (grey parts not customizable).



Concrete solutions. Always.

Sampierana S.p.A.

Via Leonardo da Vinci, 40 47021
S. Piero in Bagno (FC) - ITALY
+39 0543.904211

www.eurocomach.com



COMPANY WITH QUALITY SYSTEM
CERTIFIED BY DNV-GL

The information included in this brochure is of a general nature. Sampierana S.p.A. reserves the right to change technical data and product characteristics at any time, without prior notice. The photographs are for illustrative purposes only and do not necessarily refer to products in standard conditions. For instructions on the correct use of the products, please refer to the user and maintenance manual. Failure to comply with the instructions contained in the use and maintenance manual shall not entail any liability on the part of Sampierana S.p.A. for any damage caused to persons and/or property.