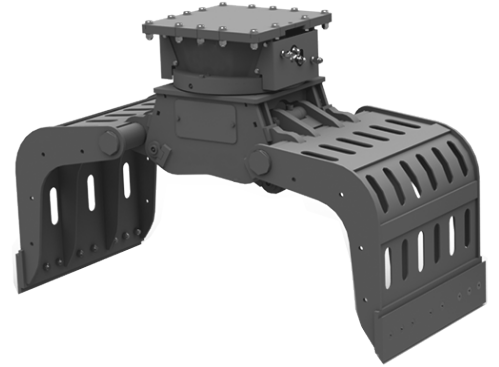


SELECTION GRAPPLES

All selection grapples are equipped with hydraulic rotation, a pressure reducing valve and HB400 steel claws. Designed for handling various materials, their particularly sturdy structure allows for even light demolition work.



Model	PSE 100	PSE 150	PSE 200	PSE 250	PSE 300	PSE 450
Excavator (tonne)	1.2-1.8	1.9-2.5	2.6-4.0	4.1-6.0	6.1-7.5	7.6-12.0
A (mm)	700	900	1100	1300	1300	1500
B (mm)	300	400	500	500	600	700
C (mm)	270	300	330	390	410	460
D (mm)	680	750	810	850	930	990
Weight (kg)	93	150	203	320	380	550
Claw pressure (bar)	180	220	245	275	350	350
Claw oil flow rate (l/min)	25	25	25	60	60	60
Rotation pressure (bar)	320	320	250	250	250	250
Rotation oil flow rate (l/min)	22	22	15/20	22/30	22/30	22/30
Hydraulic rotation	bidirectional with hydraulic rotator		bidirectional with slewing ring			



ACCESSORIES:

2-hose kit: It allows for the operation of the rotation and opening/closing of the claws even on machines equipped with a single double-acting hydraulic flow line.

Model	PSE 100	PSE 150	PSE 200	PSE 250	PSE 300	PSE 450

Pin coupler:

Model	PSE 100	PSE 150	PSE 200	PSE 250	PSE 300	PSE 450

Quick-coupling attachment coupler:

Quick-coupling attachment	Excavator (tonne)							
	0.6-2.1	2.2-2.5	2.6-3.5	3.6-4.1	4.2-5.5	5.6-6.0	6.1-7.5	7.6-10.0
AR	AR 15	AR 30		AR 40		AR 50		AR 70
CS JANUS	CS 10	CS 30						CS 80
KLAC	KLAC C	KLAC D			KLAC E			KLAC F
S NORDIC	S30/150 - S30/180		S40-200			S45	S50	
CM	CM 20	CM 30			CM 100			
KLAC Alternatik	0	1		2		3		

Connection kit:

	Excavator (tonne)							
	0.6-2.1	2.2-2.5	2.6-3.5	3.6-4.1	4.2-5.5	5.6-6.0	6.1-7.5	7.6-10.0