

MINI EXCAVATORS



Concrete solutions. Always.

25ZT

Transport weight 2.450 - 2.580 kg
Engine power 13,7 kW - 18,6 HP

 **EUROCOMACH**[®]

The extremely compact dimensions make the 25ZT (zero tail) your best ally for all your working needs.



LIKE THE GREATEST, JUST SMALLER.

DIMENSIONS

The 25ZT can rotate inside its own track width, even when the cab door is open. With the rear zero tail, the operator does not need to check the manoeuvring space during excavation operations.



This model can be equipped with four upright roll-bar protection or cab. The choice allows unmatched versatility: minimum footprint for maximum performance.

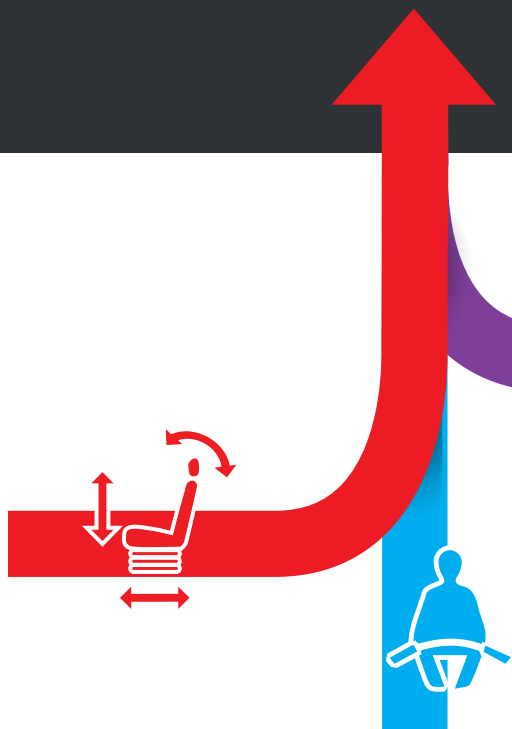


ZERO TAIL

The ergonomic driver seat includes servo assisted controls, wrist rests and motion levers with closing pedals. The foot rest pedals give the operator greater stability during the different work stages, especially when working on slopes.



COMFORT, SAFETY AND FUNCTIONALITY: FINALLY TOGETHER.



COMMANDS AND CONTROLS

The 25ZT has two motion modes: first gear with reduced speed and high thrust force and second speed with greater transfer speed. Everything is controlled by a practical button above the backfill blade lever.

Motion can be controlled using the advancement lever and integrated folding pedals that, once closed, increase the space available to the operator and prevent accidental use.

The foot board flush with the door makes for stepless exit from the cab and facilitates floor cleaning operations. It was designed to be able to be removed easily to carry out any inspections or checks.



STRAIGHT TRAVEL

In case of simultaneous control of the services and motion, the hydraulic system with variable displacement pumps simultaneously ensures the fluidity of movements and straight driving of the machine.



AUTO TWO SPEED

When the excavator needs more thrust force, the automatic speed transmission intervenes, reducing the motion ratio.

EVERY CONTROL IS IN YOUR HANDS.

The cabin, with its generous interior dimensions, offers some of the best interior space in its class. The large width of the access door makes it easy to climb in and out.

The front windshield with assisted lift promotes maximum visibility due to its considerable width. The adjustable suspension seat combined with the floating cabin, adequately dampens vibrations and bumps, maximizing operator comfort.

The cab version is also equipped with a glove compartment, a battery charger and a predisposition for the autoradio.



For quick and easy machine operation, the tilting controls and auxiliary hydraulic system controls are located on the joysticks.

VISIBILITY

The special design of the body and protective structures give the operator a wide field of vision, allowing easy control of the front tracked part.

The large windshield along with the upper rear window lets the operator keep an eye on the entire work area while remaining comfortably seated.



WORK LIGHTS

A powerful light installed on the arm optimizes visibility even with low lighting.

The position and design of the cab were designed to offer the operator the greatest possible visibility of all areas around the machine and the work area.



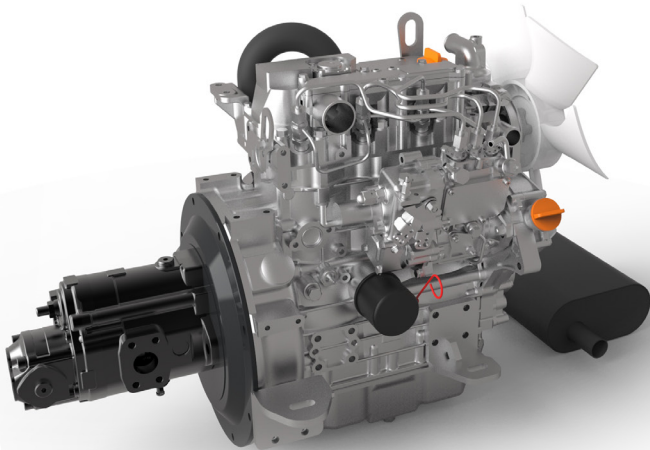
FLEXIBILITY, COMPACTNESS, ERGONOMICS.

The practical additional external ballast (optional) can, when needed, further increase the excellent operating stability without compromising the overall size of the machine.

EFFICIENCY AND CONSUMPTION

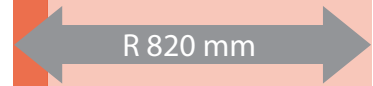
The heart of the excavators is the efficient YANMAR 3TNV76 - Stage 5 engine designed and built to optimize performance and reduce fuel consumption.

The long intervals between programmed maintenance contribute to economic efficiency, reducing costs and machine downtime.



SAFETY

Machine safety means operator peace of mind. Sensors monitoring the manipulator position prevent accidental control of the machine. The excavator startup system does not allow ignition when control of the commands is active. Safety belts, the cabin structure and rollbar with FOPS level I and TOPS certificate provide all of the safety needed in the cab in the event of an accident.



OPTIONAL COUNTERWEIGHT

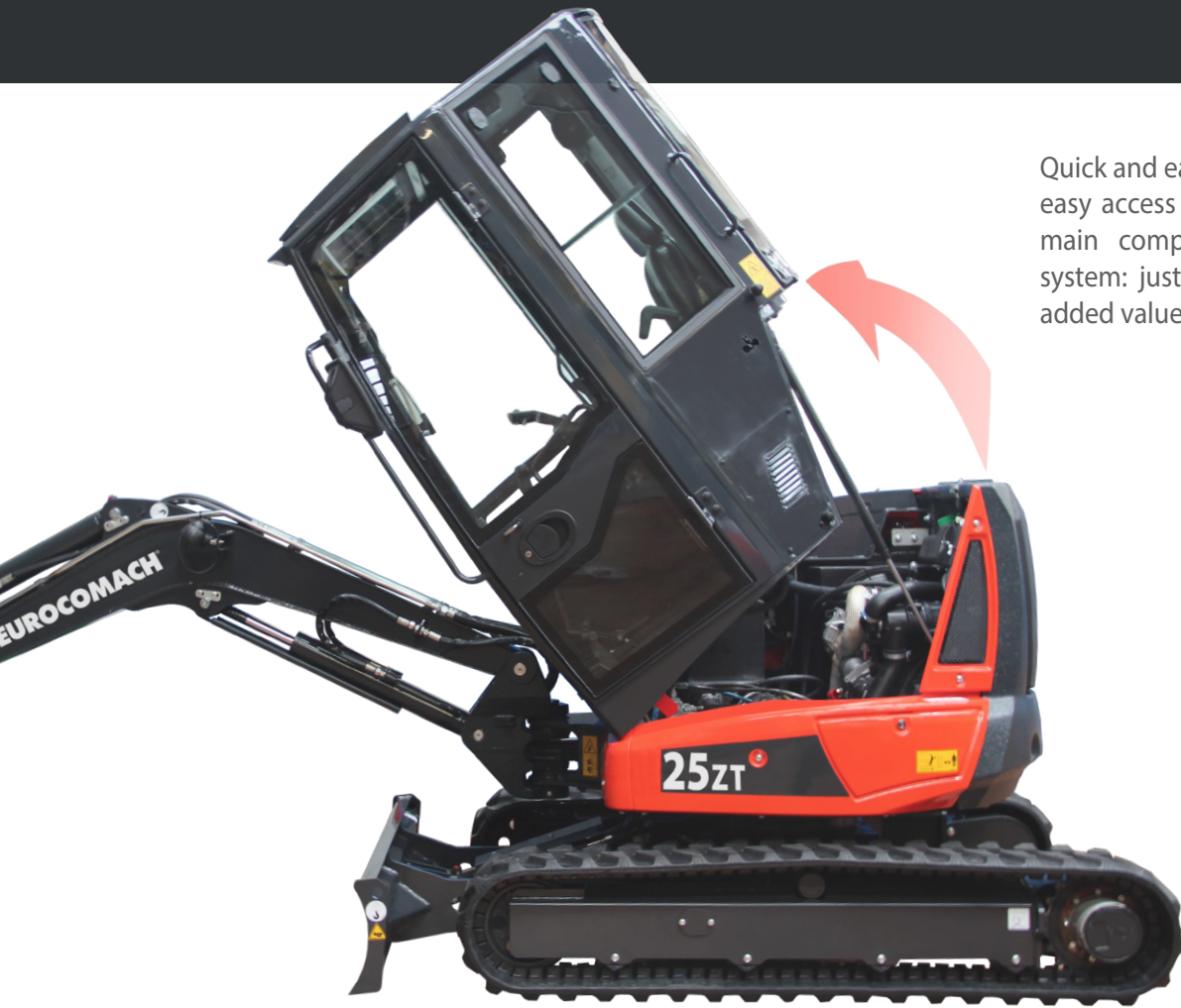
TRANSPORT ACCESSIBLE TO ALL.



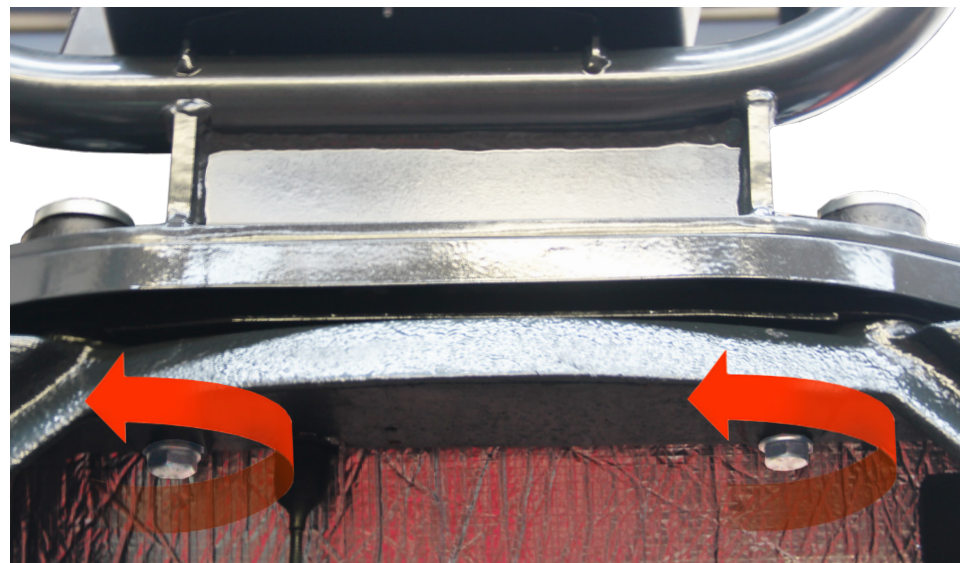
The compact size and overall weight below 25 quintals make the machine suitable for loading on a trailer, making it possible to transport a complete range of equipment and accessories.



MAINTENANCE HAS NEVER BEEN SO EASY.



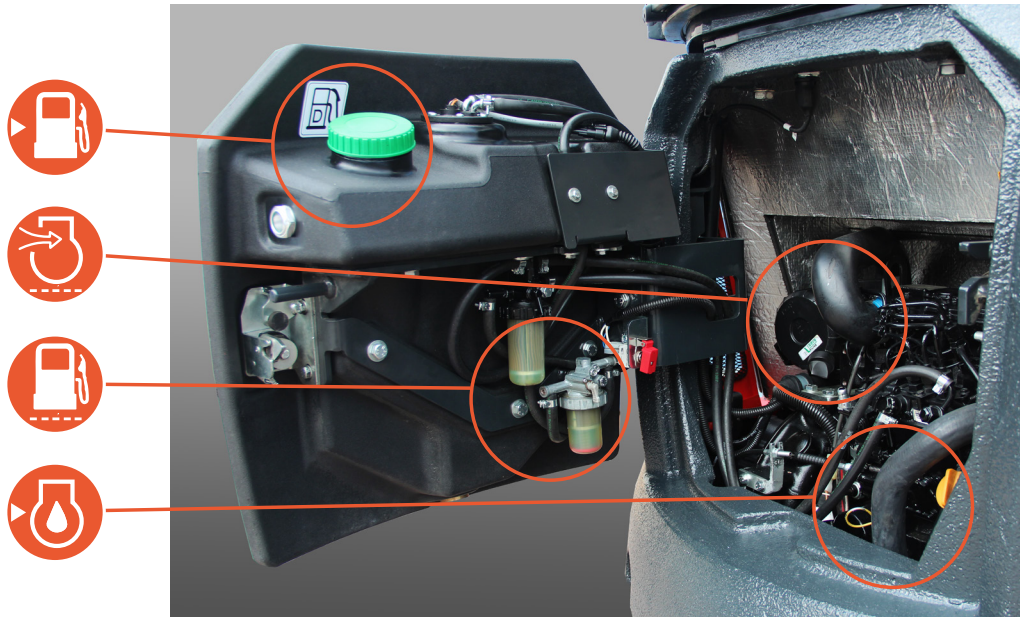
Quick and easy tipping of the cab gives easy access to the distributor and the main components of the hydraulic system: just a few gestures for major added value.



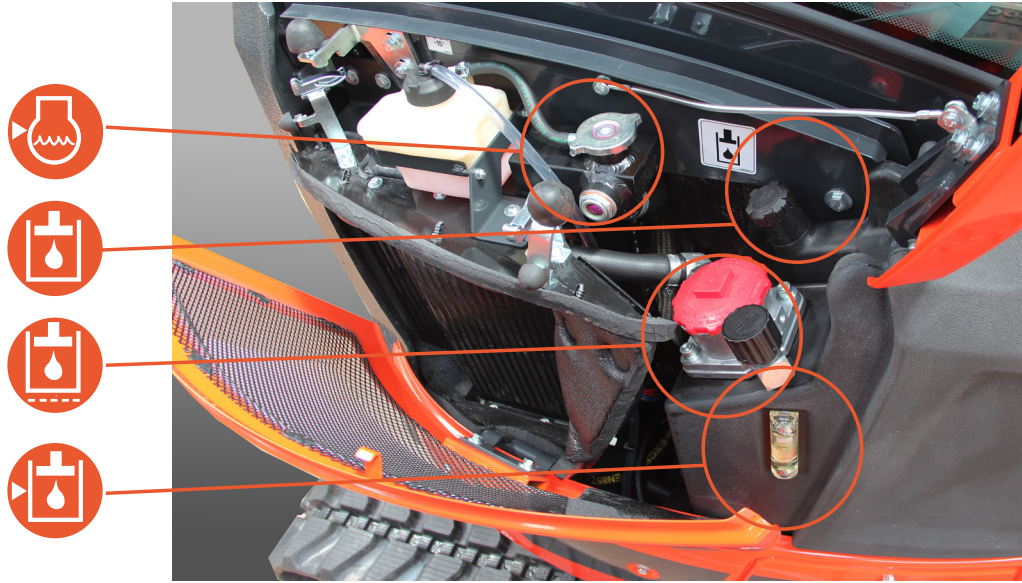
ACCESSIBILITY

The cab can be lifted by simply opening the rear compartment and removing the two mounting screws.

The large gas tank built into the rear compartment allows accessibility and above ordinary routine maintenance. The rear engine compartment offers quick access to all filters on the heat engine (fuel, oil and air) in addition to easy topping up of fuel and motor oil.



The side compartment opens to allow easy checks and cleaning of the heat exchanger and hydraulic oil filter.



All access points for daily checks and for routine maintenance are concentrated in defined areas, optimizing machine downtime. All elements are easily accessible and located in practical and functional positions.



The location of the cabin aeration filters allow them to be quickly checked and replaced if necessary.



ACCESSIBILITY

Common or dedicated access areas make every maintenance operation quick and easy.



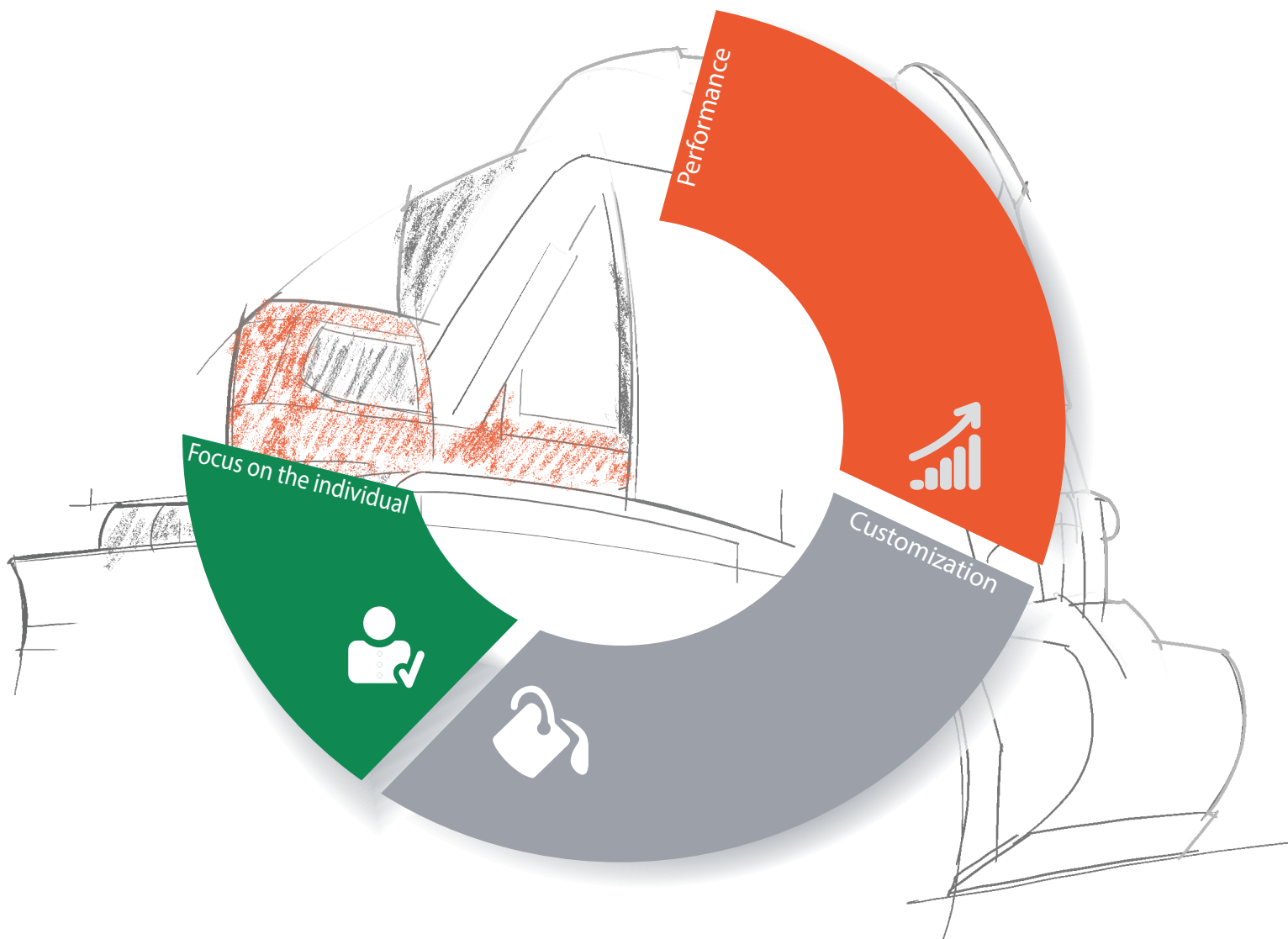
BUILT-IN TANK

The added value in the 25ZT is the presence of the fuel tank built into the rear ballast, which make it unique in its class.

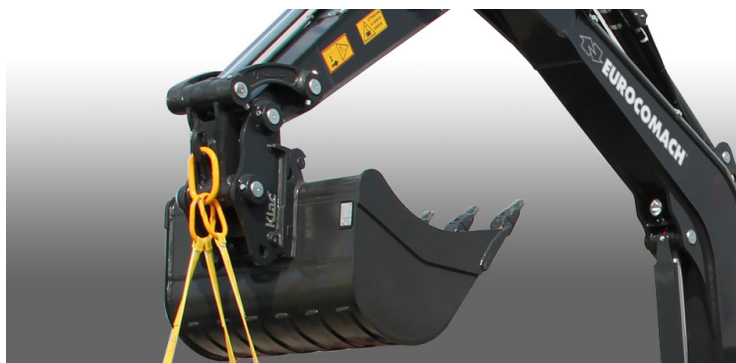
EUROCOMACH CONFIGURATION SUPPORT (ECS): ENDLESS POSSIBILITIES OF CUSTOMIZATION.

We offer a complete customisation service, offering our customers the right machine for their needs. Some of our most requested services:

- Customized paintwork
- Configuration of additional auxiliary lines
- Numerous assortment of additional equipment
- Various types of tracks



OPTIONALS.



Certified and tested lifting hook and blocking valves with CE certification for material handling equipment



Hydraulic system for chopper with additional pump (22 lt/min)

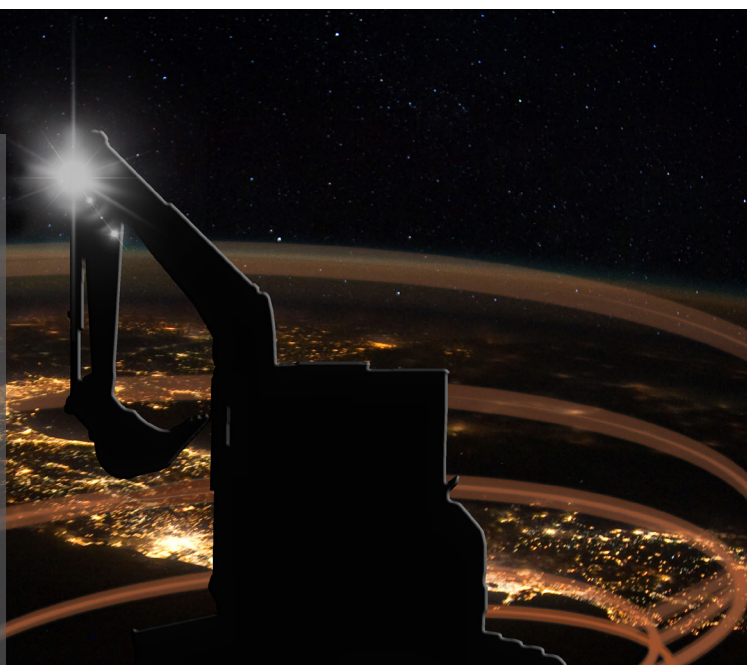


Customized paint

EUROCOMACH GEO-SERVICE.

The satellite control system allows to:

- Locate the machine's position
- Receive alerts via SMS or e-mail
- Monitor malfunctions such as: high water temperature, low engine oil pressure, low hydraulic fluid pressure, clogged filters, etc.
- Monitor actual working hours



25ZT	
ENGINE	
Diesel engine, 3 cylinders, displacement 1116 cc, watercooled	●
Electric preheater	●
Dry air filter with discharge valve and filter clogged indicator	●
Double cartridge air filter	●
Cartridge engine oil filter	●
Cartridge fuel filter	●
Fuel filter with transparent water separation container	●
Fuel tank discharge	●
Auxiliary liquid refrigerant expansion tank	●
CANOPY	
4 upright rollbar ROPS - TOPS - FOPS (Level I)	●
Adjustable mechanical suspension seat	●
Adjustable pneumatic suspension seat	○
Safety Belt	●
Wrist supports	●
Foot supports	●
Closable motion petals	●
Comfort rubber foot rest	●
Drivers seat platform assembled on 4 vibration damping elastic supports	●
Indicator light for hydraulic filter and engine air intake filter clog	●
Water temperature and fuel level indicators	●
Hour counter	●
High water temperature alarm	●
Warning buzzer	●
Single pole 12 volt power supply outlet	●
Glove compartment	●

25ZT	
CAB	
Cab ROPS - TOPS - FOPS (Level I)	○
Adjustable mechanical suspension seat	●
Adjustable pneumatic suspension seat	○
Safety Belt	●
Wrist supports	●
Foot supports	●
Closable motion petals	●
Comfort rubber foot rest	●
Drivers seat platform assembled on 4 vibration damping elastic supports	●
Heating system with speed adjustment	●
Sliding right side window	●
Sliding left side window	●
Windshield with assisted opening system (gas springs)	●
Rolling sun blind	●
Courtesy light	●
Indicator light for hydraulic filter and engine air intake filter clog	●
Water temperature and fuel level indicators	●
Hour counter	●
High water temperature alarm	●
Warning buzzer	●
Radio AM/FM USB	○
Single pole 12 volt power supply outlet	●
Glove compartment	●
Front windshield wipers with sprayer and speed control	●
SAFETY	
Machine blocking device during exit/access to the driver's seat	●
Motor starter device only with left console raised	●
Anti-slip climbing plate	●
Climbing and descending handles	●
Emergency bar	●
Rearview mirror kit	●
Anti-drift safety valve on the first arm, second arm and backfill blade	○
Pressure accumulator that allows the arm to be lowered in the event of an engine failure	●

25ZT	
HYDRAULIC SYSTEM	
Open circuit hydraulic system with variable capacity pump	●
ISO hydraulic servo-control	●
Hydraulic oil intake filter	●
Rotation parking brake	●
Motion parking brake	●
Two speed motion system	●
Automatic movement speed change (Shift-down)	●
Single/double effect hydraulic system (e.g., hammer or drill) with electrical containment	●
Hydraulic setup for calliper rotor (with switches on bucket cylinder)	○
Hydraulic setup for chopper (with additional pump)	○
AUX 2: Double effect low capacity hydraulic set up with potentiometer control on the left joystick (excludes tilt operation)	○
ELECTRICAL SYSTEM	
Work lights on the lifting arm	●
Supplementary work lights on the lifting arm	○
Supplementary front canopy/cap lights	○
Supplementary rear canopy/cap lights	○
Rotating light	○
Battery disconnect switch	●
Watertight connectors (IP67)	●
UNDERCARRIAGE	
Backfill blade	●
Dozer blade cylinder protective casing	●
Motion engines casing	●
Rotating joint protective casing	●
Rubber tracks	●
Iron tracks	○
Rubber road pad for iron tracks	○
4 anchoring points for transport	●
UTILITY	
Antitheft system	○
Geo-service system for locating and remote diagnostics	○
Second excavating arm 1,150 mm	/
Second excavating arm 1,350 mm	●
Second excavating arm 1,550 mm	○
Additional external counterweight	○
Colour customizations (RAL specific)	○
4 anchoring points for lifting	●
On-board visual fuel level indicator	●
Lifting cylinder protective casing	●

STANDARD EQUIPMENT ●
 OPTIONAL EQUIPMENT ○
 NOT AVAILABLE /

TECHNICALS SPECIFICATIONS

Operating weight with canopy (with rubber tracks)	kg	2.450
Operating weight with cabin (with rubber tracks)	kg	2.580
Travelling speed	km/h	1 ^a : 0 ÷ 2,6 / 2 ^a : 0 ÷ 4,3
Slew speed	rpm	11

ENGINE

Type	YANMAR 3TNV76 - Stage 5	
Max Power (2.200 rpm)	kW - HP	13,7 - 18,6
Displacement	cc	1.116
Number of cylinders	n°	3
Cooling	Liquid	
Consumption	lt/h	3,1
Alternator	V (A)	12 (40)
Battery	V (Ah)	12 (65)

HYDRAULIC SYSTEM

Pump type	variable flow	
Pump displacement	cc	2 x 13+8,3
Pump capacity	lt/min	2 x 28,5+18
Max. circuit calibration pressure	bar	230
Auxiliary system (max pressure): AUX 1 single or double effect	lt/min bar	45 (210)

PERFORMANCES

Max digging depth standard arm (optional arm)	mm	2.700 (2.900)
Max dumping height with canopy standard arm (optional arm)	mm	3.330 (3.460)
Max dumping height with cab standard arm (optional arm)	mm	3.190 (3.310)
Bucket breaking force (standard arm) ISO 6015	daN	2.200
Arm breaking force (standard arm) ISO 6015	daN	1.450
Traction force	daN	2.200
Ground bearing pressure with rubber tracks and canopy (with cabin)	kg/cm ²	0,28
Max slope	60% - 30°	

DIMENSIONS

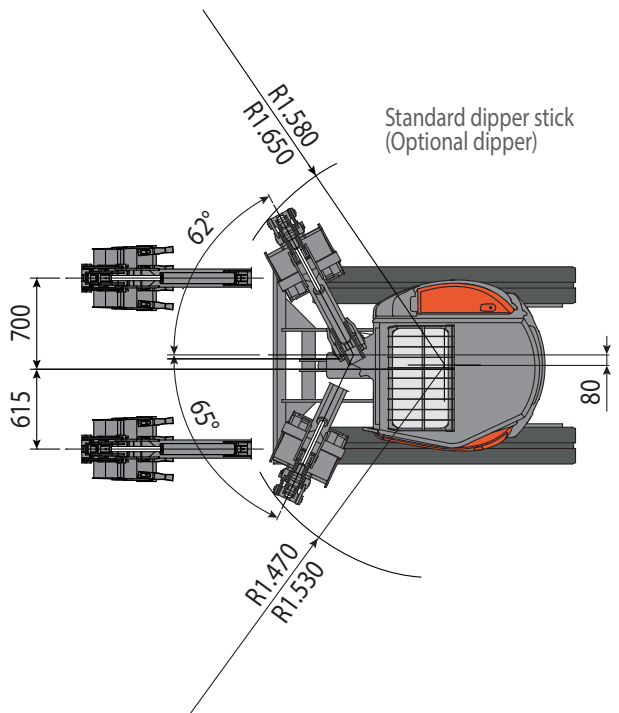
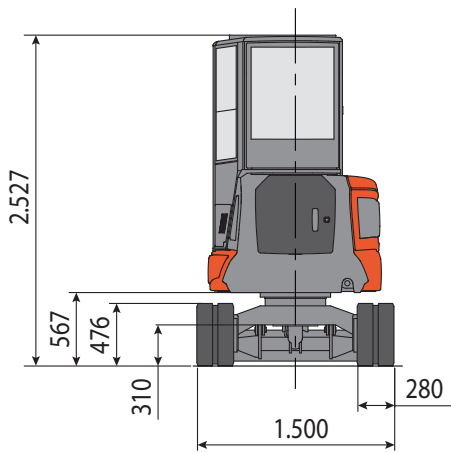
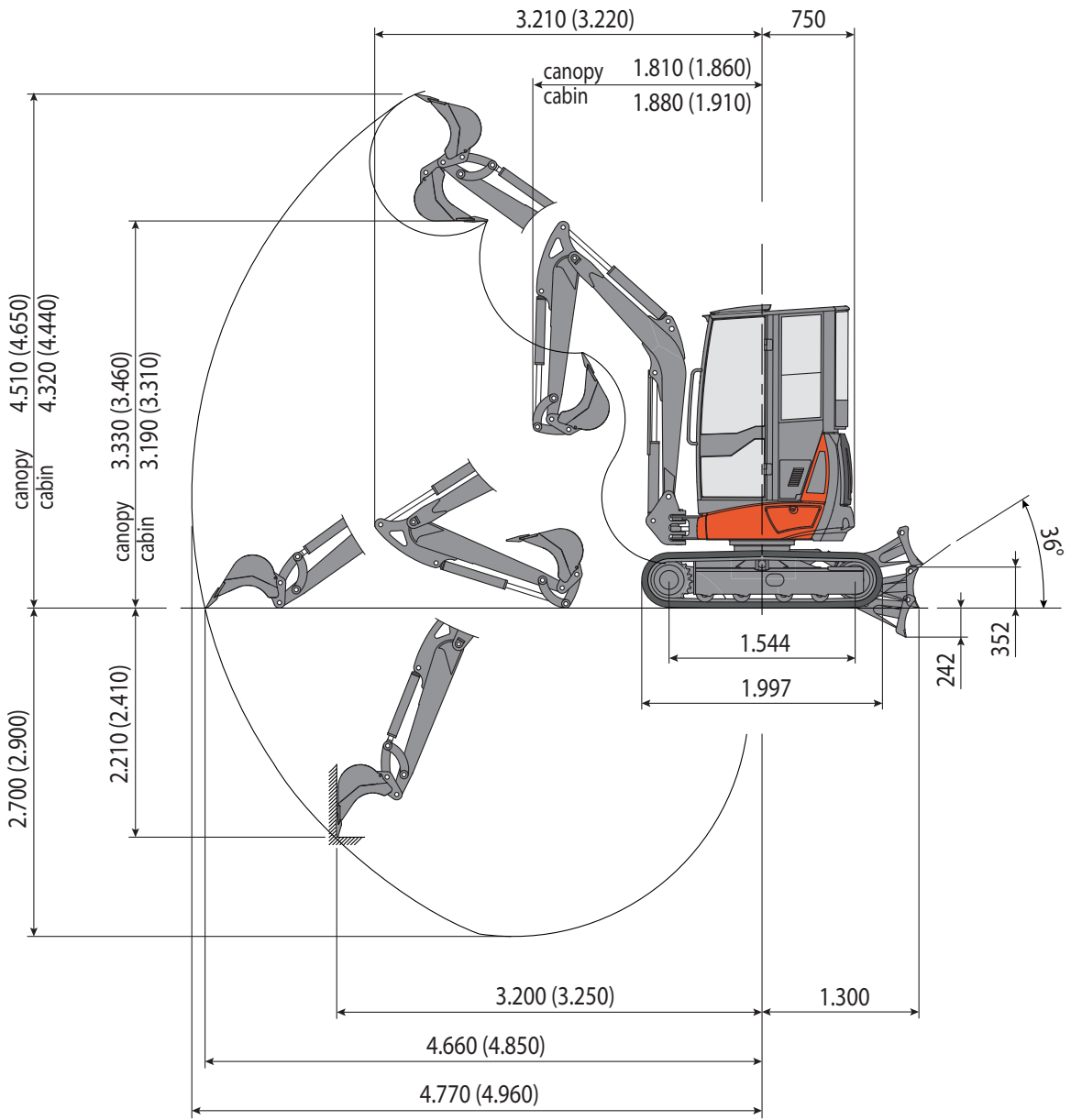
Maximum width	mm	1.500
Total height	mm	2.527
Rear rotation radius	mm	750
Digging arm length std (optional)	mm	1.350 (1.550)
Tracks width	mm	280
Rollers number (for each side)	n°	4/1

FILLINGS

Fuel tank	lt	26
Hydraulic oil tank	lt	29
Hydraulic circuit capacity	lt	40
Cooling system capacity	lt	5
Engine oil	lt	2,8

CONTROLS

Boom, dipper stick, bucket and turret swing	2 pilot joysticks	
Track movements (included counter rotation)	2 pilot levers	
Dozer blade	pilot lever	
Auxiliary system with latch AUX 1 (single or double effect)	electroproportional switch on right joystick	
Boom swing	electroproportional switch on left joystick	



LIFTING CAPACITY

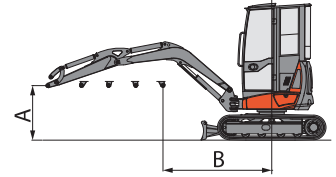
The lifting capacity is based on ISO 10567 and does not exceed 75% of the static tipping load or 87% of the hydraulic lifting capacity of the machine.

The straddle refers to the centre of rotation.

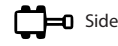
* Indicates the hydraulic load limit.

0 m refers to ground level.

The machine is understood to be equipped with a cab, rubber tracks, without a bucket and without a quick coupling.



Front



Side

Unit: ton

Raised Blade, Standard Arm (1350 mm)

() the values in parenthesis are with additional ballast: 0.12 ton

A (m)	B (m)								
	1.0		2.0		3.0		MAX		MAX
3.0					0,39 (0,44)	0,3 (0,35)	0,21 (0,26)	0,2 (0,25)	3,40 m
2.0					0,38 (0,44)	0,33 (0,39)	0,22 (0,26)	0,21 (0,25)	3,94 m
1.0			*0,76 (*0,76)	0,63 (0,45)	0,37 (0,43)	0,38 (0,44)	0,24 (*0,32)	0,24 (0,27)	4,12 m
0			*0,69 (*0,69)	0,58 (0,39)	0,36 (0,41)	0,3 (0,36)	0,25 (0,29)	0,24 (0,28)	3,99 m
-1.0	*0,78 (*0,78)	*0,78 (*0,78)	*0,64 (*0,64)	0,53 (0,34)	0,35 (0,41)	0,3 (0,35)	0,27 (0,31)	0,25 (0,3)	3,51 m

Lowered Blade, Standard Arm (1350 mm)

() the values in parenthesis are with additional ballast: 0.12 ton

A (m)	B (m)								
	1.0		2.0		3.0		MAX		MAX
3.0					*0,58 (*0,58)	0,3 (0,44)	*0,38 (*0,38)	0,2 (0,25)	3,40 m
2.0					*0,57 (*0,57)	0,33 (0,35)	*0,4 (*0,4)	0,21 (0,25)	3,94 m
1.0			*0,97 (*0,97)	0,63 (0,74)	*0,56 (*0,56)	0,38 (0,39)	*0,41 (*0,41)	0,24 (0,27)	4,12 m
0			*1,00 (*1,00)	0,58 (0,68)	*0,53 (*0,53)	0,3 (0,44)	*0,43 (*0,43)	0,24 (0,28)	3,99 m
-1.0	*1,16 (*1,16)	*0,78 (*0,78)	*0,95 (*0,95)	0,53 (0,63)	*0,53 (*0,53)	0,3 (0,36)	*0,44 (*0,44)	0,25 (0,3)	3,51 m

Raised Blade, Optional Arm (1550 mm)

() the values in parenthesis are with additional ballast: 0.12 ton

A (m)	B (m)								
	1.0		2.0		3.0		MAX		MAX
3.0					0,38 (0,44)	0,29 (0,35)	0,05 (0,1)	0,04 (0,09)	3,65 m
2.0					0,37 (0,43)	0,32 (0,38)	0,06 (0,1)	0,05 (0,1)	4,15 m
1.0			*0,75 (*0,75)	0,62 (0,44)	0,36 (0,42)	0,37 (0,43)	0,08 (0,16)	0,08 (0,12)	4,32 m
0			*0,68 (*0,68)	0,57 (0,38)	0,35 (0,41)	0,29 (0,35)	0,09 (0,13)	0,08 (0,12)	4,20 m
-1.0	*0,77 (*0,77)	*0,77 (*0,77)	*0,63 (*0,63)	0,52 (0,33)	0,34 (0,4)	0,29 (0,35)	0,11 (0,15)	0,09 (0,14)	3,75 m

Lowered Blade, Optional Arm (1550 mm)

() the values in parenthesis are with additional ballast: 0.12 ton

A (m)	B (m)								
	1.0		2.0		3.0		MAX		MAX
3.0					*0,57 (*0,57)	0,29 (0,43)	*0,22 (*0,22)	0,04 (0,09)	3,65 m
2.0					*0,56 (*0,56)	0,32 (0,35)	*0,24 (*0,24)	0,05 (0,1)	4,15 m
1.0			*0,96 (*0,96)	0,62 (0,73)	*0,55 (*0,55)	0,37 (0,38)	*0,25 (*0,25)	0,08 (0,12)	4,32 m
0			*1,00 (*1,00)	0,57 (0,68)	*0,53 (*0,53)	0,29 (0,43)	*0,27 (*0,27)	0,08 (0,12)	4,20 m
-1.0	*1,15 (*1,15)	*0,77 (*0,77)	*0,94 (*0,94)	0,52 (0,62)	*0,52 (*0,52)	0,29 (0,35)	*0,28 (*0,28)	0,09 (0,14)	3,75 m



The information contained in this brochure is of a general nature. Sampierana S.p.A. reserves the right to change the product technical data and characteristics at any time without prior notice. The photographs are for illustrative purposes only and do not necessarily refer to products in standard conditions. For instructions on the correct use of the products, please consult the use and maintenance manual. Sampierana S.p.A. shall not be liable for damages or injuries resulting from failure to follow the instructions contained in the use and maintenance manual.